



Ningbo Technic Lighting Co.,Ltd.

PRODUCT MANUAL

FURNITURE-2024

Ningbo Technic Lighting Co., Ltd, founded in 2009, specialize in LED lighting solution with innovation, design and production for global retailer and shopping environment.

We focus on design and manufacture of furniture&display LED, shelves lighting, showcase lighting and general commercial LEDs. Start from 2004, we own precision and injection tooling company, mainly provide support for fast development and good quality for innovative and new products. We own 35 experienced engineers in R&D support from optical, mechanical, electrical, thermal and power, prototype and global certificate in LED industry.

With a construction area of 30,000 square meters, automatic production line, advanced production facility, and mass production capability. The whole production managed under the ERP controls from production plan to finalized product and shipment. With production automatically controlled and superior quality standard, excute 100% quality control and 100% inspection during the whole QM system in whole production process.

30,000
m²

SQUARE METERS

35 +

EXPERIENCED
ENGINEERS

100%

QUALITY CONTROL &
INSPECTION DURING

≥300

CURRENT PATENT

HIGHLY SUPPORT CUSTOMIZED LIGHTING SOLUTION

Throughout our whole team endeavor in the past 17 years, Ningbo Technic Lighting Co. Has become a reliable partner and recommended supplier for development and production of lighting fixture as sale support material for global retailer market. We established non-disclosure system with partners, highly support customized lighting solution for rollout program that ensure most valuable and convenient serve for worldwide clients.

PROVIDE HIGH EFFICIENCY LED SOLUTION

Perfect LED solution as visual element creates greatly help for brand value and culture, attract consumers and instruct consumers choose what they want, as well as build amazing shopping environment. We provide high efficiency LED solution that brings energy saving to reduce maintenance cost for merchandisers.



DEVELOPMENT HISTORY



Setup strategic partner with
Hettich support for LED cabinet
and furniture lightings

2005

2004

HENGJIE start furniture lighting

Recognized as national
high-Tech-enterprise

2012

2009

NINGBO TECHNIC LIGHTING
setup
--LED driver and Control system

Tooling company setup for
precision mould & CNC

2015

2014

FUCHENG LIGHTING merge to
Hengjie, enlarge the business
capability

Move to new factory
Enlarged to 30000m2

2020

2018

NingBo R&D setup
Driver division build develop

Recognized as the
high-tech enterprise R&D
center

2023

2022

Award as NingBo 5 star
management enterprise



SERVICES

4



• COMPLETED PRODUCTION PROCESS

Completed production process internally support from tooling, injection, hardware, riveting, glue, SMT, electrical and assembly, all finished and supervised under total quality management.

• FAST RESPONSE

Provide one stop LED solution, and originally produced at our own factory with customized, professional serve. Fast response is the key advantage to satisfy our partners.

• PROVIDE WHOLE SYSTEM

Provide the whole lighting system, that is able to integrate power supply, intelligent control, LED connecting into lighting fixtures.

• HIGH EFFICIENCY POWER SUPPLY AND INTELLIGENT SMART CONTROLLER

Capability of design and produce high efficiency power supply and intelligent smart controller is the core technology and make competitive in the market, that finally contribute to all clients.

TECHNICAL RESEARCH & DEVELOPMENT

R&D Team specialized in the latest technology in LED lighting industry.
Design and develop capabilities for power and controllers and lighting fixtures.
Engineering team from power source, optic, electronics, mechanical, thermal etc engineers.



TECHNICAL QUALITY & TESTING

UL/ETL/VDE/CE/ERP/BS

ISO and UL QMS certified. Quality control running through whole process from pre-design, plan, process and production 100% checking and 100% aging test for all products.



CATALOGUE

NINGBO TECHNIC LIGHTING CO., LTD



14
SKY LARDER



16
LURKER 2



26
INNER 2



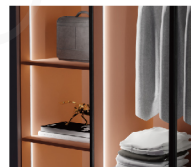
28
MEROPE



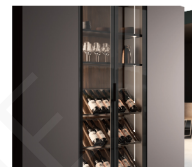
18
SLIM



20
BOUNCER 3



30
BIO



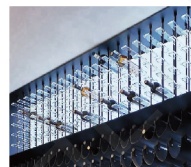
32
MINI BIO



22
THALIA



24
THALIA 2



34
GALAXY



36
SKY

CATALOGUE

NINGBO TECHNIC LIGHTING CO., LTD



38
NOOK



40
NOOK 2



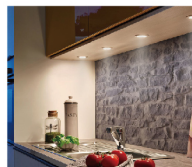
49
POWER



50-60
CONTROL



42
SHELF



44
CLIO



61-66
CONNECTION



46
SPOT



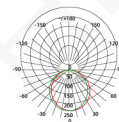
48
PEARL



Feature

- Fixed under the cupboard simply by screws.
- Uniform illumination with edge lit design.
- Seamless connection with locking system.
- With IR sensor.

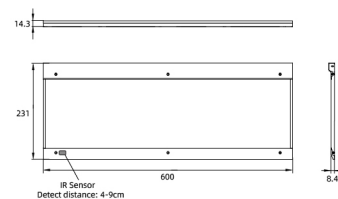
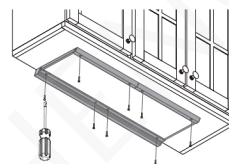
Luminous Intensity



Specifications

Item	Length	Rated Input	Power	CCT	Efficiency	RA	IP	Beam angle
HJL03-0075	600 mm	24V DC	6.1 W	3000K	75 lm/W	>90	20	110°

Installation & Dimensions: (mm)

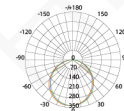




Feature

- Super slim design, with only 8mm thickness.
- Simple installation. Can be fixed under the cupboard by screws, simple and aesthetical mounting solution.
- Seamless connection with locking system.
- With IR sensor

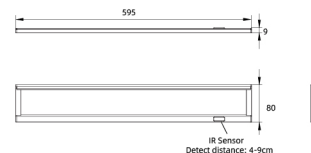
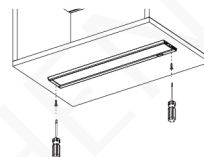
Luminous Intensity



Specifications

Item	Length	Rated Input	Power	CCT	Efficiency	RA	IP	Beam angle
HJL03-025LI-02	595 mm	24V DC	6.0 W	3000K	55 lm/W	>90	20	115°

Installation & Dimensions: (mm)

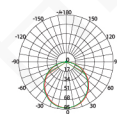




Feature

- Ultra-thin design, Surface mounting in the cupboard, which has less impact on the aesthetics of furniture.
- With touch switch version & without touch switch version, can be used as set lights.
- Hidden screw installation, convenient and beautiful.
- Integrated lens design lead to a good lighting effect.

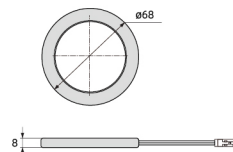
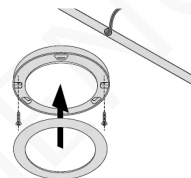
Luminous Intensity



Specifications

Item	Size	Rated Input	Power	CCT	Efficiency	RA	IP	Beam angle
HJL05-009RT	ø68mm x 8mm	24V DC	2.5 W	3000K	85 lm/W	>90	20	115°

Installation & Dimensions: (mm)

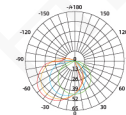




Feature

- Flexible cut in length fit for various drawers.
- Mounting fixture adjustable in length max.40mm.
- Plug&play for simple assembly.
- With IR sensor.

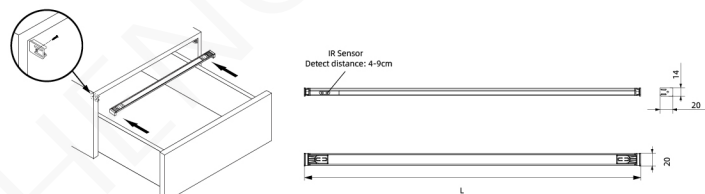
Luminous Intensity



Specifications

Item	Length	Rated Input	Power	CCT	Lumen	RA	IP	Beam angle
HJL32-017LI	563 mm	24V DC	4.0 W	3000K	200 lm	>90	20	110°
	763 mm		7.3 W		365 lm			

Installation & Dimensions: (mm)

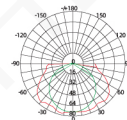




Feature

- Suspension mounting for easy installation and removal
- Double-layer lampshade for even illumination, outer transparent lampshade for exquisite luxury

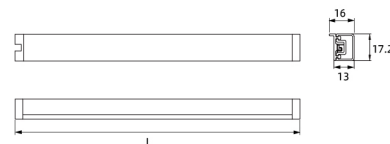
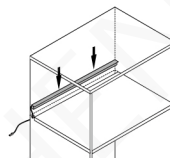
Luminous Intensity



Specifications

Item	Length	Rated Input	Power	CCT	Lumen	RA	IP	Beam angle
HJL26-006L	1000 mm	12V DC	10 W	3000K	660 lm	>90	IP20	140°
		24V DC		4000K				
				2700-6500K				

Installation & Dimensions: (mm)

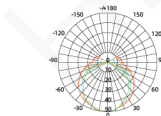




Feature

- Applied to light up the back cabinet.
- Applied to wooden back board lit up.
- Edge-lit for smooth illumination.
- Cuttable in any length.
- Quick connection from input cable.

Luminous Intensity



Specifications

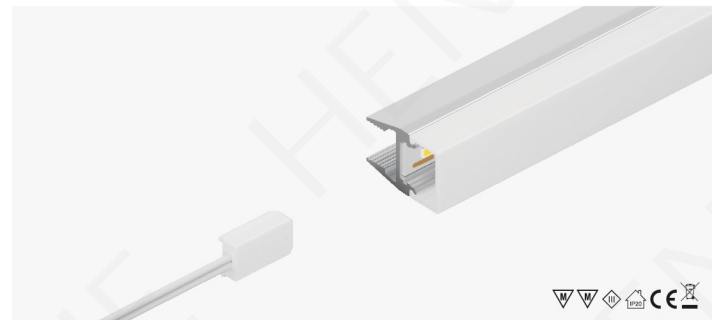
Item	Length	Rated Input	Power	CCT	Efficiency	RA	IP	Beam angle
HJL26-006L-02	Max.3000mm	24V DC	10 W/m	3000K	80 lm/W	>90	20	130°

Installation & Dimensions: (mm)





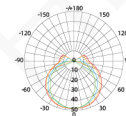
LINEAR LIGHT INNER 2



Feature

- Applied to glass back board lit up.
- Edge-lit for smooth illumination.
- Cut-free & smooth continuous lighting.
- Quick connection from input cable.

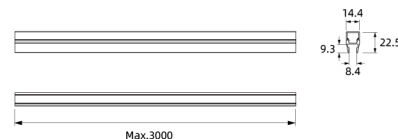
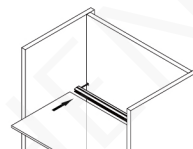
Luminous Intensity

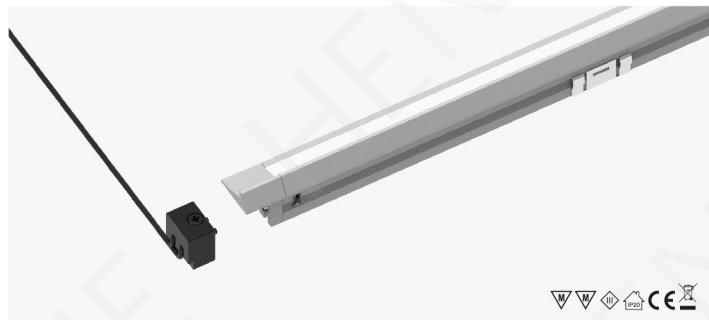


Specifications

Item	Length	Rated Input	Power	CCT	Efficiency	RA	IP	Beam angle
HJL22-008L-02	Max.3000mm	24V DC	10 W/m	3000K	80 lm/W	>90	20	130°

Installation & Dimensions: (mm)

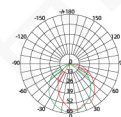




Feature

- Light with separate wire for easy installation.
- Super slim connection for elegant profile.
- Glare-free light for 45 degree diffuser.
- Cut-free & smooth continuous lighting.

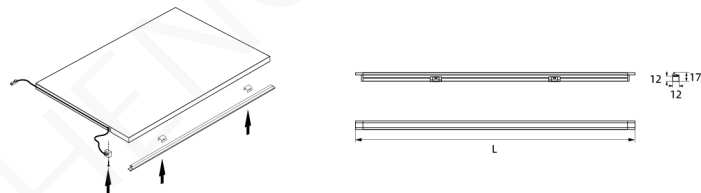
Luminous Intensity

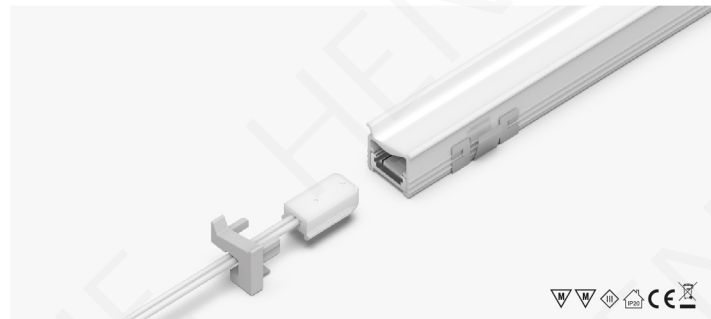


Specifications

Item	Length	Rated Input	Power	CCT	Lumen	RA	IP	Beam angle
HJL82-010L	300 mm	24V DC	2.6 W	3000K	80 lm	>90	20	100°
	663 mm		5.7 W		170 lm			

Installation & Dimensions: (mm)

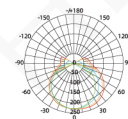




Feature

- Cut-free and smooth continuous lighting.
- Recessed mounting integrate into furniture.
- Fast connection by quick connector.
- Anti-glare design.

Luminous Intensity

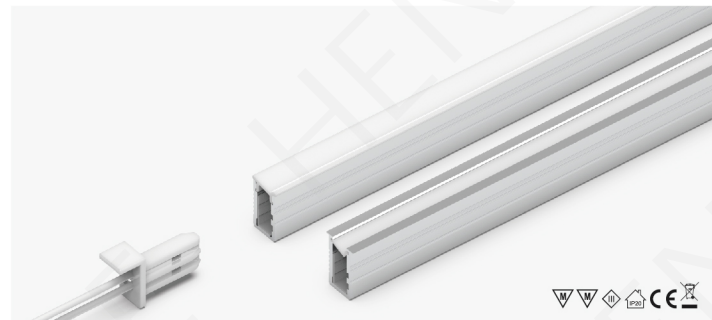


Specifications

Item	Length	Rated Input	Power	CCT	Efficiency	RA	IP	Beam angle
HJL82-033L	Max.3000mm	24V DC	8 W/m	3000K	80 lm/W	>90	20	130°

Installation & Dimensions: (mm)

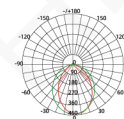




Feature

- Cut freely. Fit for diversified demands.
- Super slim design integrate into furniture.
- Individual power connector. Fast and stable connection.
- Structure polarized design. Anti-glare.

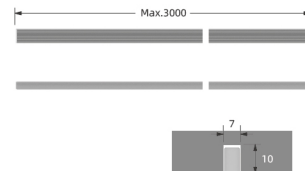
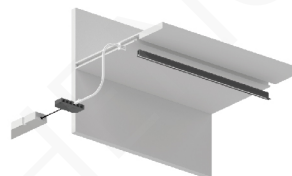
Luminous Intensity



Specifications

Item	Length	Rated Input	Power	CCT	Efficiency	RA	IP	Beam angle
HJLB2-033L-01	Max. 3000mm	12/24V DC	5 W/m	3000K	220 lm/meter	>90	20	120°
HJLB2-033L-02								

Installation & Dimensions: (mm)

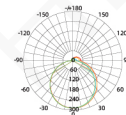




Feature

- Plug & play (External power supply)
- Super thin design (Min.3mm)
- Uniform illumination
- Easy installation
- Edge-lit illumination
- Customized design size up to 4' x 3'
- Light diffuser design for smooth illuminance

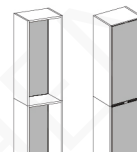
Luminous Intensity



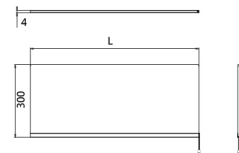
Specifications

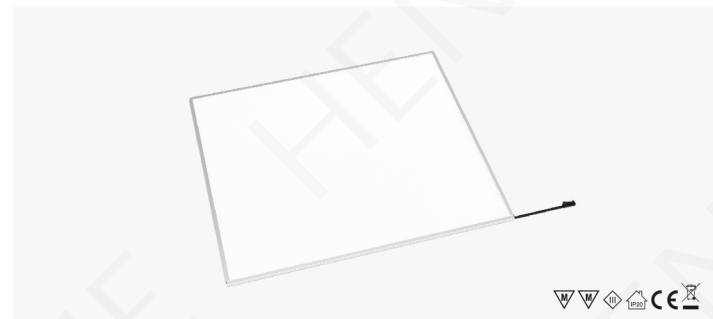
Item	Length	Rated Input	Power	CCT	Efficiency	RA	IP	Beam angle
HJL03-026	300 mm	12V DC	2.5 W	4000K	110 lm/W	>90	20	120°
	600 mm		5.0 W					

Installation & Dimensions: (mm)



Installation diagram in cabinet

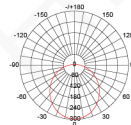




Feature

- Surface light, light uniform soft not dazzling
- 8.5mm thickness, wrapped with profiles on both sides, suitable for 9mm backplane slot instead of 9mm backplane
- Kitchen open shelf, open wardrobe light back

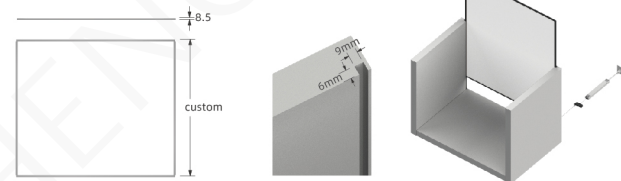
Luminous Intensity



Specifications

Item	Length	Rated Input	Power	CCT	Efficiency	RA	IP	Beam angle
HJL63-0275	Customizable	24V DC	24V DC	4000K	160 lm/W	>90	20	-

Installation & Dimensions: (mm)

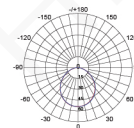




Feature

- Face luminous uniform light, soft light without glare
- Touch switch, the main light can control multiple secondary lights (up to 7)
- Right angle design can be used in any corner
- Surface mounting, screw fixing
- Standard with LED connecting cable
- Customizable exterior color
- Customizable color temperature

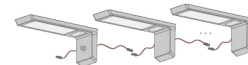
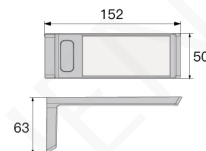
Luminous Intensity



Specifications

Item	Length	Rated Input	Power	CCT	Efficiency	RA	IP	Beam angle
HJL03-024S	152x50x63 mm	24V DC	3 W	4000K	198 lm/W	>90	20	105°
HJL03-024ST	152x50x63 mm		3 W					

Installation & Dimensions: (mm)



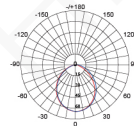
* Multiple connections possible



Feature

- The main light comes with a hand-swept sensor, soft start
- Dimming function can be realized by covering the sensing surface for a long time
- Surface mounting, screw fixing, easy to install
- Wide luminous surface, illuminates the countertop, safe operation
- The main lamp and the secondary lamp can be connected and linked to each other

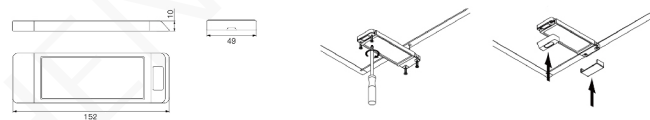
Luminous Intensity



Specifications

Item	Length	Rated Input	Power	CCT	Efficiency	RA	IP	Beam angle
HJL03-0245-02	152x49x10 mm	24V DC	3 W	4000K	160 lm/W	>90	20	-
HJL03-0245I-02	152x49x10 mm		3 W					

Installation & Dimensions: (mm)

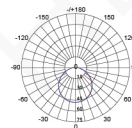




Feature

- It is the combination of LEDs and anodized aluminum glass shelf
- All you need to do is drill a cable hole on the back board of the cabinet and put this shelf on the holders, then light up your cabinet with HJ power supply
- Combine with Needle, with uniform lighting effect, invisible LED dots, anti-glare

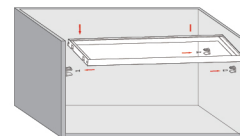
Luminous Intensity



Specifications

Item	Length	Rated Input	Power	CCT	Efficiency	RA	IP	Beam angle
HJL63-0275	Customizable	24V DC	24V DC	4000K	160 lm/W	>90	20	-

Installation & Dimensions: (mm)





- Economy version of the round lamp, very cost-effective
- Surface mounting (with base)
- No light spot, even and soft light
- Opening diameter 65mm (recessed installation)
- Customizable color
- Customizable color temperature

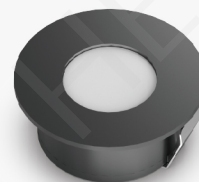
Item	Size	Rated Input	Power	CCT	Efficiency	RA	IP	Beam angle
HJL82-011R	ø70mm x 11mm	12V DC	2 W	3000K	65 lm/W	>90	20	106°

Technical drawing of a circular part with a diameter of 70 mm. The drawing shows a circle with a center point and a diameter line passing through the center, labeled with the symbol $\varnothing 70$.



11.0

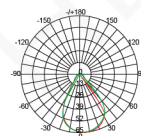
Flush mounting (without base)



Feature

- Powerful LED spotlight
- Accentuation by small beam angle
- Versatile

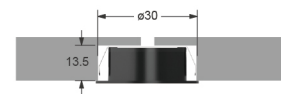
Luminous Intensity



Specifications

Item	Size	Rated Input	Power	CCT	Efficiency	RA	IP	Beam angle
HJL85-014R	ø36mm x 13.5mm	12VDC	1.2 W	3000K	80 lm/W	>90	20	50°

Installation & Dimensions: (mm)

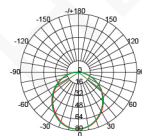




Feature

- Powerful LED spotlight
- Accentuation by small beam angle
- Versatile

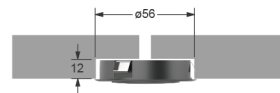
Luminous Intensity



Specifications

Item	Size	Rated Input	Power	CCT	Efficiency	RA	IP	Beam angle
HJL82-019R	ø60mm x 12mm	12VDC	3 W	3000K	60 lm/W	>90	20	110°

Installation & Dimensions: (mm)



LED Power Supply

ADVANCE SERIES



Linear constant voltage output	HJA30-12VL HJA30-24VL
	HJA45-12VL HJA45-24VL
	HJA60-12VL HJA60-24VL HJA30-12VL(UN) HJA30-24VL(UN)
	HJA75-12VL HJA75-24VL
	HJA100-12VL HJA100-24VL HJA60-12VL(UN) HJA75-24VL(UN)
	HJA120-12VL HJA120-24VL
Intelligent constant voltage output	HJA150-12VL HJA160-24VL
	HJA200-24VL HJA200-48VL
	HJD75-12VFM HJD75-24VFM
Multi-function constant voltage output	HJD100-12VFM HJD100-24VFM
	HJD15-24VLM
	HJD30-24VLM HJD40-24VLM
	HJD60-24VLM HJD75-24VLM HJD100-24VLM HJD120-24VLM
	HJD150-24VLM

STANDARD SERIES



Ultrathin constant voltage / constant current output	HJA6-12VF HJA6-24VF-1
--	-----------------------

BASIC SERIES



Ultrathin constant voltage / constant current output	HJA6-12VF-2 HJA6-24VF-2
Ultrathin constant voltage output	HJA15-12VF-2 HJA15-24VF-2

PLUG-IN SERIES



Ultrasmall constant voltage / constant current output	HJA8-12VGW HJA8-24VGW
	HJA15-12VGW HJA15-24VGW

CONTROL SERIES

MOTION CONTROLLER



PIR sensor controller

- Human-body detection: when people moving in the detection area, light turn on. After the set time, if there is no any motion detecting, light turn off
- Terminal block for quick connection
- Optional Sensor
- Delay time can be set from 10 sec to 3min.
- HJK300-250VGH LED load power: Max.300W
- HJK120-24VGH LED load power: 12V:Max.60W, 24V:Max.120W
- 5-year warranty



Microwave sensor controller

- LifeBeing detect: Integrated 24G microwave sensor with breathing, final motion and moving detection function
- Built-in ambient light detect
- Configurable Dimming down function In the delay time when people leave
- Delay time, sensing distance and ambient light can be set by dip switch.
- LED load power: 12V:Max.36W 24V:Max.72W
- 5-year warranty



Microwave sensor controller

- Microwave detection: when people moving in the detection area, light turn on; When human-body leaves the detection range or no motion detected in the detection range, light turn off.
- Detection range can be adjusted by potentiometer
- Terminal block for quick connection
- LED load power: 12V:Max.60W 24V:Max.120W
- 5-year warranty

CONTROL SERIES

TOUCHLESS CONTROLLER



IR sensor controller

- Infrared detection: When open the door, light turn on; when close the door, light turn off
- Terminal block for quick connection
- Optional Sensor
- HJK300-250VGI LED load power: Max.300W
- HJK120-24VGI LED load power: 12V:Max.60W, 24V:Max.120W
- With 2 selectable function (change by push the function set button) : "Door switch function" and "Wave control function"
- Detection range:4-12mm is recommended
- Memory function: Light will return to last setting before shut off.
- Delay Time: after 10 minutes close, When the door is always open
- 5-year warranty



IR sensor controller

- Infrared detection: When open the door, light turn on; when close the door, light turn off
- Wave control function: Wave hand first time, switch light on; wave hand second time, switch light off; wave hand third time, switch light on again (and so on...)
- Detection range:5-10mm is recommended
- LED load power: 12V:Max.36W 24V:Max.72W
- 5-year warranty



IR sensor controller

- Wave control function: Wave hand first time, switch light on; wave hand second time, switch light off; wave hand third time, switch light on again (and so on...)
- Dimming for CCT
- Optional Sensor
- Detection range: 4-12mm is recommended
- LED load power: 12V:Max.60W 24V:Max.120W
- 5-year warranty



CONTROL SERIES

TOUCHLESS CONTROLLER



Touch sensor controller

- Capacitive Touch Switch:After touching the pad the first time, it turns on, and the second time it turns off.
- Max. thickness of board 30mm
- LED load power: 12V:Max.36W 24V:Max.72W
- 5-year warranty



Touch sensor controller

- Capacitive Touch Switch:After touching the pad the first time, it turns on, and the second time it turns off.
- Dimming for CCT
- LED load power: 12V:Max.36W 24V:Max.72W
- With blue color LED indicator
- 5-year warranty



Touch sensor controller

- Capacitive Touch Switch:After touching the pad the first time, it turns on, and the second time it turns off.
- Dimming for CCT(HJT120-24VGC)
- Terminal block for quick connection
- Optional Sensor
- Mini plug for sensor connection
- HJT120-24VGC LED load power: 12V:Max.60W 24V:Max.120W
- HJT300-250VGC LED load power: Max.300W
- 5-year warranty



CONTROL SERIES

MULTIFUNCTIONAL CONTROLLER



IR&PIR sensor controller

- Patented technology to identify traditional IR and PIR sensor, support 1-2 sensors work together.
- Infrared detection: When open the door, light turn on; when close the door, light turn off
- Human-body detection: when people moving in the detection area, light turn on. After the set time, if there is no any motion detecting, light turn off
- Optional Sensor
- With 2 selectable function (change by push the function set button): "Door switch function" and "Wave control function"
- Detection range: 4-12mm is recommended
- LED load power: 12V:Max.60W 24V:Max.120W
- 5-year warranty



IR&PIR sensor controller

- Patented technology to identify traditional IR and PIR sensor, support 1-3 sensors work together.
- Infrared detection: When open the door, light turn on; when close the door, light turn off
- Human-body detection: when people moving in the detection area, light turn on. After the set time, if there is no any motion detecting, light turn off
- Optional Sensor
- With 2 selectable function (change by push the function set button): "Door switch function" and "Wave control function"
- Detection range: 4-12mm is recommended
- LED load power: 12V:Max.60W 24V:Max.120W
- 5-year warranty



CONTROL SERIES

WIRELESS CONTROLLER



Wireless receiver

- Use with wireless remote control
- 1. ON/OFF:
- Use with PIR Sensor
- 1.Human-body detection: when people moving in the detection area, light turn on. After the set time, if there is no any motion detecting, light turn off
- 2. Delay time: 3min
- Use with Magnetic collision emitter
- 1.When open the door, light turn on; when close the door, light turn off
- 2.Delay Time: after 10 minutes close, When the door is always open
- 5-year warranty



Wireless receiver

- Use with wireless remote control
- 1. ON/OFF:
- 2. Dimming between 0.2%-100%(HJK120-24VGR)
- 3. Dimming for CCT between 0.2%-100% (HJT120-24VGR)
- Use with PIR Sensor
- 1.Human-body detection: when people moving in the detection area, light turn on. After the set time, if there is no any motion detecting, light turn off
- 2.Delay time: 3min
- Use with Magnetic collision emitter
- 1.When open the door, light turn on; when close the door, light turn off
- 2.Delay Time: after 10 minutes close, When the door is always open
- 5-year warranty



Wireless receiver

- Use with wireless remote control
- 1. ON/OFF:
- 2. Dimming between 5%-100%(HJK72-24VFR)
- 3. Dimming for CCT between 5%-100% (HJT72-24VFR)
- Use with PIR Sensor
- 1.Human-body detection: when people moving in the detection area, light turn on. After the set time, if there is no any motion detecting, light turn off
- 2.Delay time: 3min
- Use with Magnetic collision emitter
- 1.When open the door, light turn on; when close the door, light turn off
- 2.Delay Time: after 10 minutes close, When the door is always open
- 5-year warranty



CONTROL SERIES

MULTIFUNCTIONAL CONTROLLER



Wireless receiver

- Use with wireless remote control
 1. ON/OFF:
 2. Dimming between 5%-100%
- Use with PIR Sensor
 1. Human-body detection: when people moving in the detection area, light turn on. After the set time, if there is no any motion detecting, light turn off
 2. Delay time: 3min.
- Use with Magnetic collision emitter
 1. When open the door, light turn on; when close the door, light turn off
 2. Delay Time: after 10 minutes close, When the door is always open
- Use with IR Sensor
 1. Infrared detection: When open the door, light turn on; when close the door, light turn off
 2. Delay time can be set from 10 sec to 10min.
- Use with Touch Switch
 1. Capacitive Touch Switch: After touching the pad the first time, it turns on, and the second time it turns off.
- 5-year warranty

Wireless receiver

- Use with wireless remote control
 1. ON/OFF:
 2. Dimming between 5%-100%
- Use with PIR Sensor
 1. Human-body detection: when people moving in the detection area, light turn on. After the set time, if there is no any motion detecting, light turn off
 2. Delay time: 3min.
- Use with Magnetic collision emitter
 1. When open the door, light turn on; when close the door, light turn off
 2. Delay Time: after 10 minutes close, When the door is always open
- 5-year warranty



CONTROL SERIES

WIRELESS CONTROLLER



Wireless receiver

- Rf signal repeater up to 8 layers rf signal repeater
- The first layer canNo need match withwireless transceiver
- Wide supply voltage: 5-24V DC
- 5-year warranty



Zigbee receiver zigbee

- Zigbee 2-wire color temperature controller
- 5-year warranty

OTHER



Duplicator

- ON/OFF and dimming signal copied to output
- Low delay, high accuracy
- Isolation between Output and signal
- 5-year warranty

OPTIONAL

Wireless transceiver Sensor

NINGBO TECHNIC LIGHTING CO., LTD

2024 www.technic-lighting.com

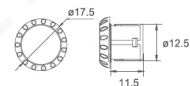
SENSOR CONTROL SERIES

HJS-IR1



IR Sensor

- Detection Range: 5-10 cm
- Hole size: $\phi 14\text{mm}$

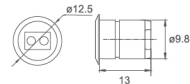


HJS-IR2



IR Sensor

- Detection Range: 5-10 cm
- Hole size: $\phi 10\text{mm}$

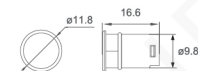


HJS-IR3



IR Sensor

- Detection Range: 5-10 cm
- Hole size: $\phi 10\text{mm}$

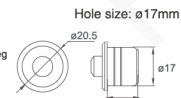


HJS-PIR



PIR Sensor

- Detection Range: 1-3 m; Max.100 Deg
- Hole size: $\phi 17\text{mm}$

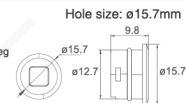


HJS-PIR2



PIR2 Sensor

- Detection Range: 1-3 m; Max.100 Deg
- Hole size: $\phi 17\text{mm}$

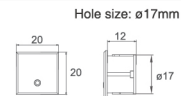


HJS-TOUCH



TOUCH Sensor

- Hole size: $\phi 17\text{mm}$

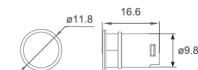


HJS-TOUCH2



TOUCH Sensor

- Hole size: $\phi 10\text{mm}$



HJK-TSP

Size: 86.5x86.5x11.4mm

**Dimming and color temperature Scene panel**

- 12/24 VDC, 17mA; ta: -20...+35°C
- Remote distance: Max.15m
- Function: on/off switch;
- Can be divided into 3 groups, each group can pair up to 5 receivers
- This parameter is configurable for a single scenario

HJK-TSP-1

Size: 86.5x86.5x11.4mm

**Dimming and color temperature Scene panel**

- 2.5-3.3 VDC, 40mA; ta: -20...+35°C
- Remote distance: Max.15m
- Can be divided into 3 groups, each group can pair up to 5 receivers
- This parameter is configurable for a single scenario

HJT-RMT

Size: 43x43x10mm

**2.4G Color temperature remote**

- 2.0-3.3 VDC, 17mA; ta: -20...+35°C
- Remote distance: Max.15m
- Function: on/off switch; Support color temperature control
- Battery life: 5 years

HJT-RMT2

Size: ø38x18.5mm

**2.4G Color temperature & dimmer remote**

- 2.0-3.3 VDC, 17mA; ta: -20...+35°C
- Remote distance: Max.15m
- Function: on/off switch; Support color temperature & dimmer control
- Battery life: 3 years

HJK-RMT2

**2.4G Dimmer remote**

- 2.0-3.3 VDC, 17mA; ta: -20...+35°C
- Remote distance: Max.15m
- Function: on/off switch; Support dimmer control
- Battery life: 3 years

HJK-RMT4

**2.4G Magnet switch transceiver**

- 2.0-3.3 VDC, 17mA; ta: -20...+35°C
- Remote distance: Max.15m
- Function: on/off switch; Support dimmer control
- Battery life: 3 years

HJK-RMT5

**2.4G Three way dimmer remote**

- 2.0-3.3 VDC, 17mA; ta: -20...+35°C
- Remote distance: Max.15m
- Independent switch function for each road (including dimming)
- Function: on/off switch; Support dimmer control
- Battery life: 5 years

HJK-HRMT

**2.4G PIR transceiver**

- 2.0-3.3 VDC, 17mA; ta: -20...+35°C
- Angle: 100°; Detection range(depend on sensor): 1-3m
- Function: PIR-S switch the light on when people moving in the detection area.
- Battery life: 3 years

HJW01-1022B / HJW01-1122W

**Connect Cable with LED Mini Female/Male connector**

- 24V, 3A
- 2x0.34mm² cable, optional colour: blk/blk-red, white/white-blk, transparent
- optional: tin/copper plated, black /white LED male /female connector

HJW03-1022B / HJW03-1122W

**3-way-distributor**

- 24V, 3A
- 2x0.34mm² cable, optional colour: blk/blk-red, white/white-blk
- optional: tin/copper plated, black/white LED male/female connector

HJW06-1022B / HJW06-1122W

**6-way-distributor**

- 24V, 3A
- 2x0.34mm² cable, optional colour: blk/blk-red, white/white-blk
- optional: tin/copper plated, black/white LED male/female connector

HJW06-1220B / HJW06-1220W

**6-way-distributor with fuse**

- 24V, 6A
- 2468 20AWGx2C black/white cable
- tin/copper plated

HJW10-1318B / HJW10-1318W

**10-way-distributor**

- 24V, 10A
- H03VVH2-F 2x0.75mm² black/white cable
- tin/copper plated

HJW01-0122W / HJW01-0122W-01

**Connect Cable with JST-2510 Female/Male connector**

- 24V, 3A
- 2x0.34mm² cable, optional colour: blk/blk-red, white/white-blk, transparent
- optional: tin/copper plated, black/white JST-2510male/female connector

HJW04-0318W

**JST-2510 4-way-distributor**

- 24V, 10A
- H03VVH2-F 2x0.75mm² black/white cable
- tin/copper plated

HJW06-0318W

**JST-2510 6-way-distributor**

- 24V, 10A
- H03VVH2-F 2x0.75mm² black /white cable
- tin/copper plated

HJW12-0318W

**JST-2510 12-way-distributor**

- 24V, 10A
- H03VVH2-F 2x0.75mm² black /white cable
- tin/copper plated

HJW04-0622W

**RGB 4-way-distributor**

- 24V, 3A
- 4x22AWG white cable
- tin/copper plated

HJW04-0622W-1

**RGB 4-way-distributor**

- Max.24V, 3A
- 4x22AWG white cable
- tin/copper plated

HJW04-2122W

**Connect Cable with JST-XH-2 Female/Male connector**

- 24V, 3A
- 2x0.34mm² black/white cable
- tin/copper plated, white JST-XH-2 male/female connector

HJW01-4420W

**D8 LV Female/male Connectors**

- 24V, 6A
- 2464 2x20AWG black/white cable
- tin/copper plated

HJW06-4418W

**D8 LV 6-way Distributor**

- 24V, 6A
- 2464 2x18AWG black/white cable, with 5A fuse
- tin/copper plated

HJW01-4320W-1

**D8 HV Female Connectors**

- 250VAC, 2.5A
- H03VVH2 2x0.5mm² white cable
- tin/copper plated

HJW01-4320W

**D8 HV Male Connectors**

- 250VAC, 2.5A
- H03VVH2 2x0.5mm² white cable
- tin/copper plated

HJW06-4318W

**D8 high pressure six-hole female distributor**

- Max.250VAC, 2.5A
- H03VVH2 2x0.75mm² white cable
- tin/copper plated

HJW01-4320W-2

**TYCO MINI HV Female/male Connectors**

- Max.250VAC, 2.5A
- H03VVH2 2x0.5mm² white cable
- tin/copper plated

HJW01-5318W / HJW01-5318W-1

**AMP HV Female/male Connectors**

- Max.250VAC, 7A
- H03VVH2 2x0.75mm² white cable
- tin/copper plated

HJW01-5318B / HJW01-5318B-1

**AMP HV LED mini Female/male Connectors**

- Max.250VAC, 7A
- H03VVH2 2x0.75mm² white cable
- tin/copper plated

HJW01-6022B

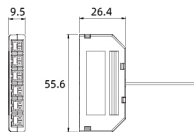
**8mm solderless connector**

- Apply to tape-wire connection, no soldering need
- Strain relief lock appliance
- Keep width fit for extrusion profile
- 2x0.34mm² cable, optional colour: blk/blk-red, white/white-blk, transparent

HJW06-10419B

**6-way distribution for ex-power**

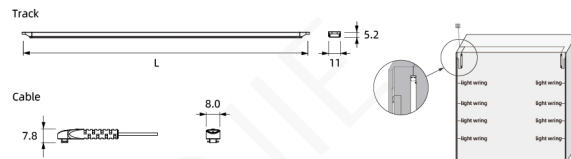
- Max.10A input
- Max.6A for one way output
- Strain Relief lock appliance
- Multi-protection pin design



HJW01-8218B / HJW01-8222B

**POWER TRACK MANAGEMENT**

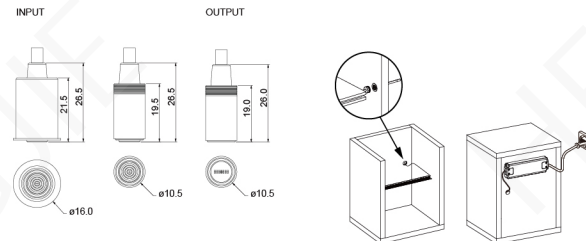
- Electrical for 24V input and output loading
- Replace junction box or harness
- Magnet or screw mounting
- Input cable: 2x18AWG cable(Max.24V,8A)
- Output cable: 2x22AWG cable(Max.24V,3A)

Installation & Dimensions: (mm)

HJW01-7022B

**Magnet connecting system**

- Magnet male&female connector
- Recessed mounting integrate into cabinet
- Adaptor connection
- Max.3A(24V)

Installation & Dimensions: (mm)

HJW01-9022B

**Shelf connecting system**

- Slim power track system
- Recessed mounting into cabinet
- Non visible area for cable through
- Optional color fit for cabinet
- Shelf movable for electrical power
- Max.3A(24V)

Installation & Dimensions: (mm)